

# Inequality, Opportunity, and What It Will Take to Get Less of the Former and More of the Latter

Jared Bernstein

CBPP

Seattle, WA

Washington State Budget and Policy Center

12/12/13

# Current Events: Where Are We, Economy-Wise?

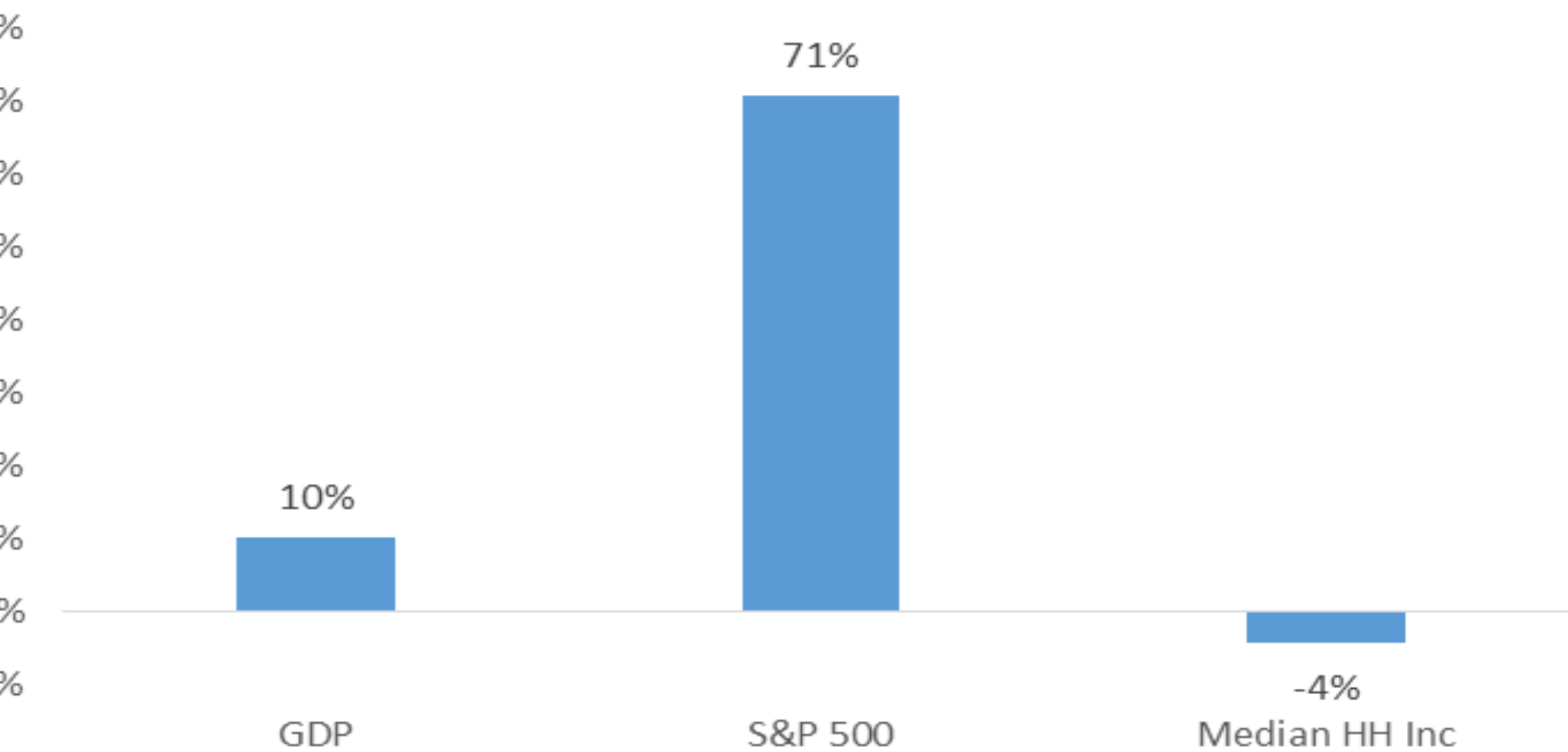
Getting better doesn't mean you're healed.

Just who's economy you talkin' about?

Recent employment trends, the good, the less good

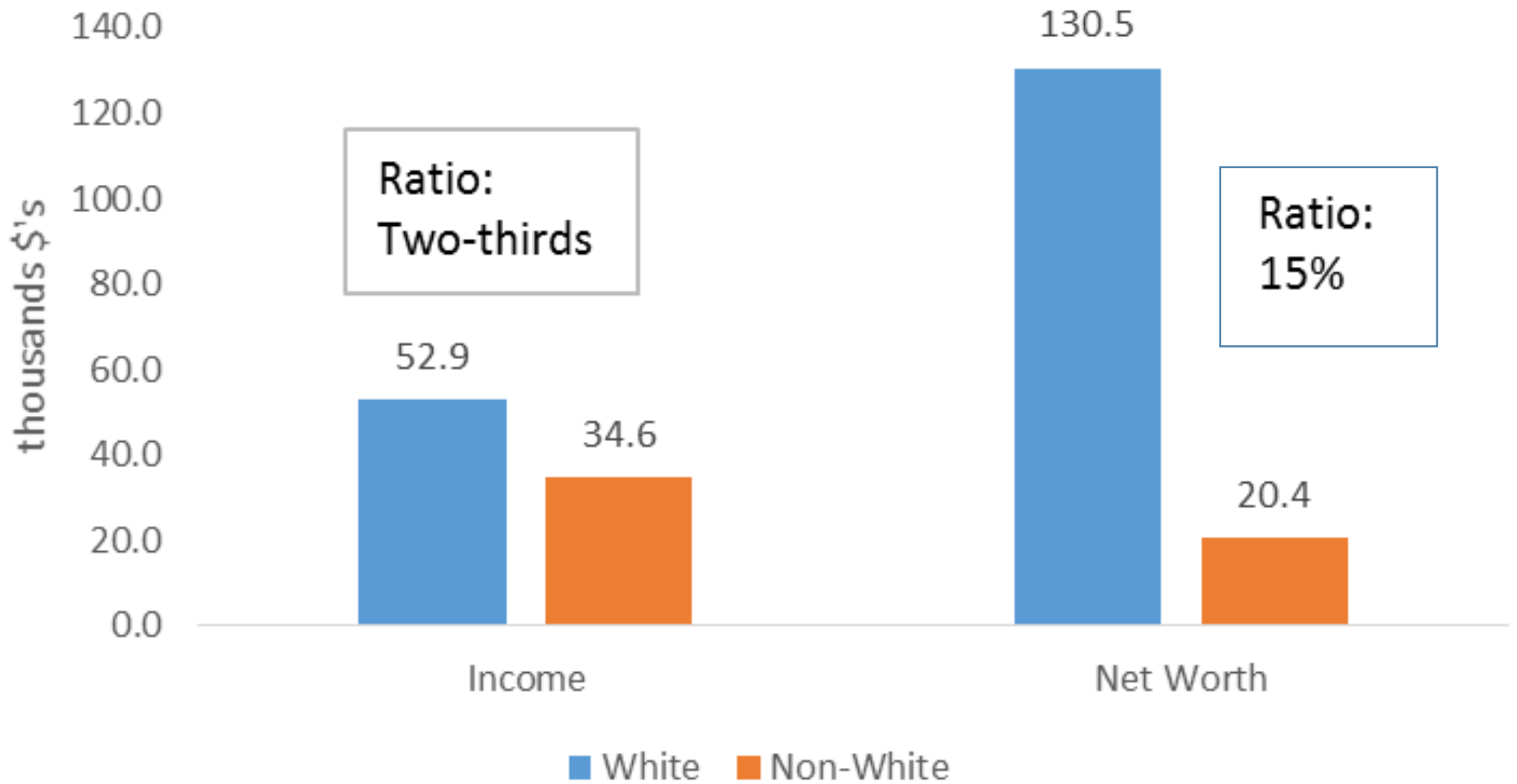
Washington State and the nation: lots of similarities by one very conspicuous difference (i.e., tax revenues)

# Real % Change over Recovery (2009q2-now)



Sources: BES, S&P, Sentier Research

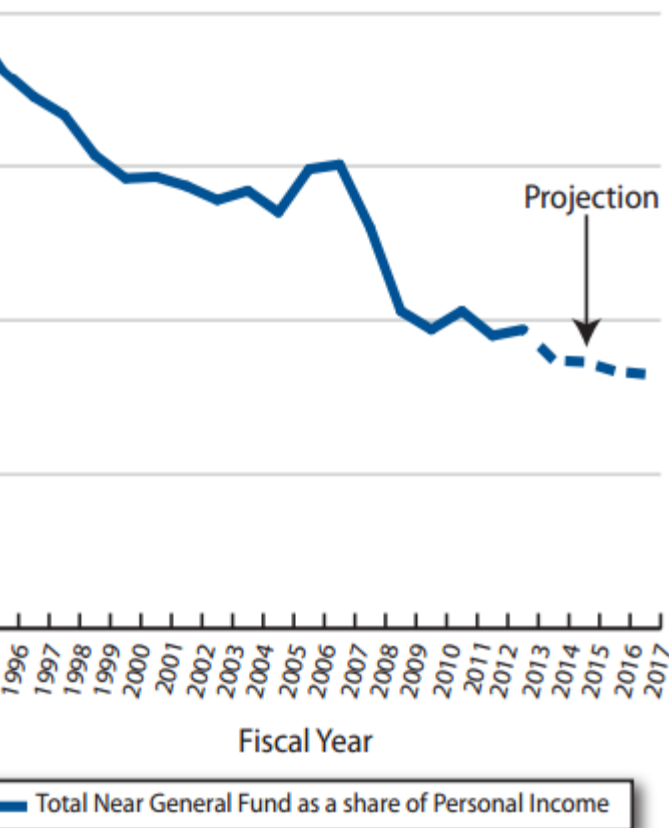
# Median Income vs Median Wealth by Race, 2010



Source: SCF

### FIGURE 4. Revenue System Cannot Keep Pace With State Economy

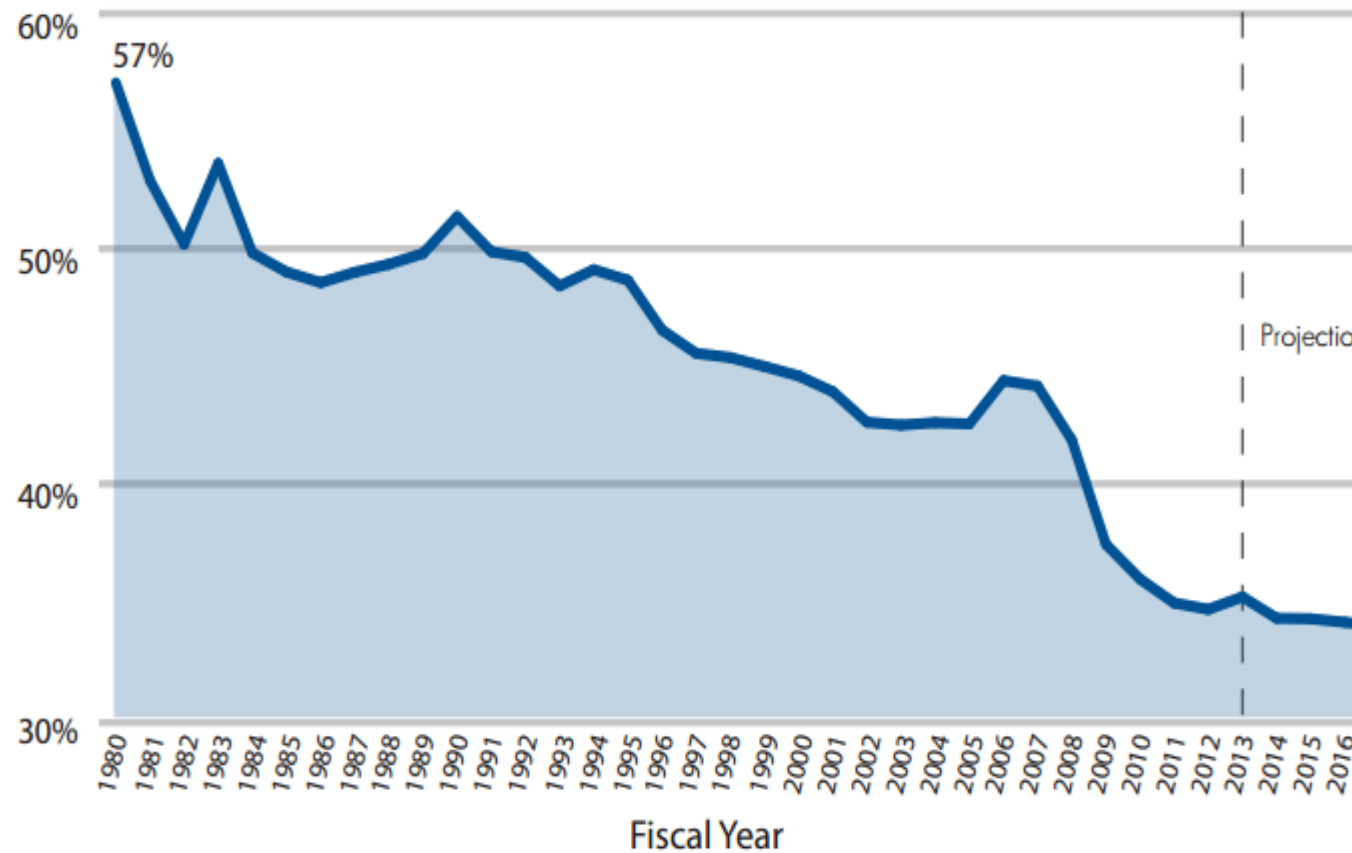
Total Near General Fund as a share of personal income for fiscal year 1995 to 2017\*



BPC analysis; data from ERFC. \*Projected values for fiscal year 2013 through 2017.

### FIGURE 5. Taxable Retail Sales Have Plummeted as a Share of the Economy

Taxable retail sales as a percent of state personal income for fiscal year 1980 to 2017\*



Source: BPC analysis; data from ERFC. \*Projected values for fiscal year 2013 through 2017.

# What's Wrong

Slack Labor Markets

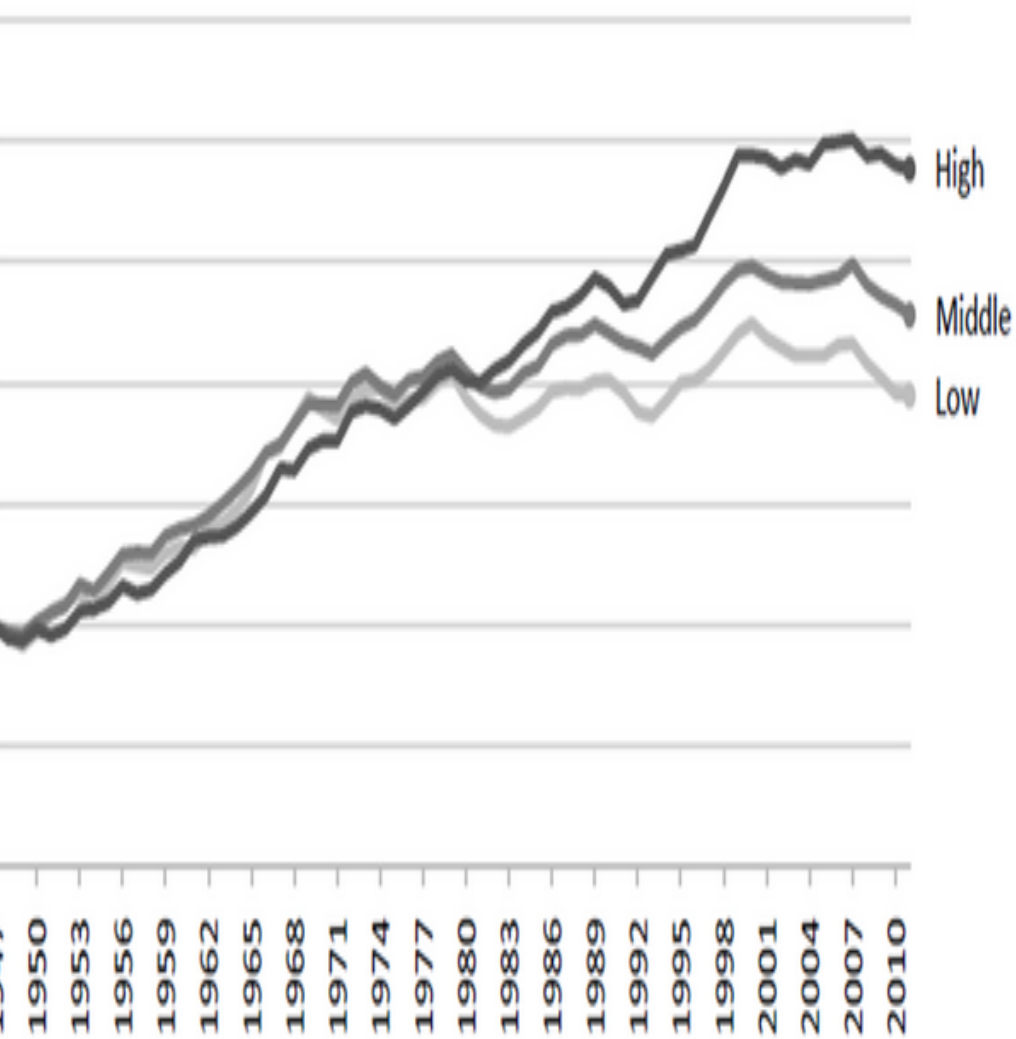
Structural inequality feeds into:

- Diminished opportunity
- Dysfunctional politics
- Macro-economic problems (bubble, bust, repeat)

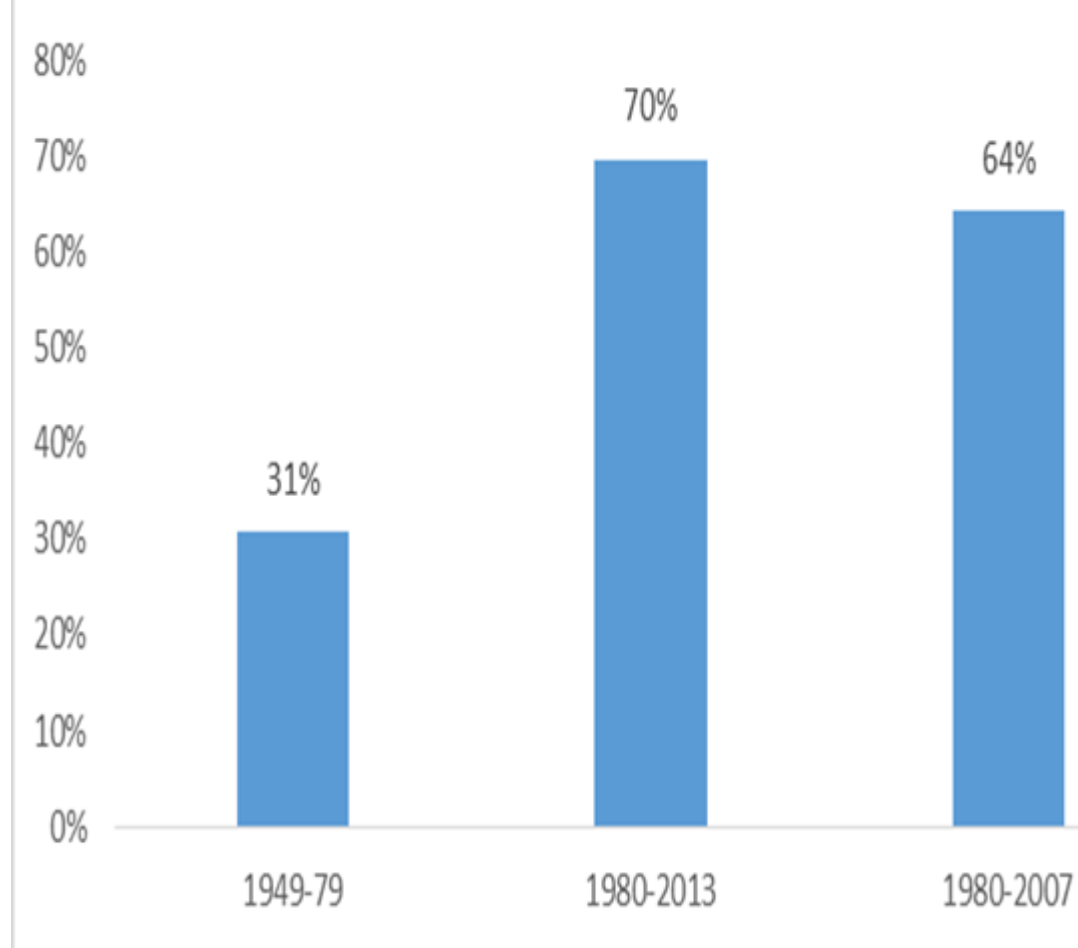
Facts versus ideology, truthiness, “think tanks” for hire, etc.

Austerity, “Deficit Attention Disorder”

Middle, and High Incomes, 1947-2011

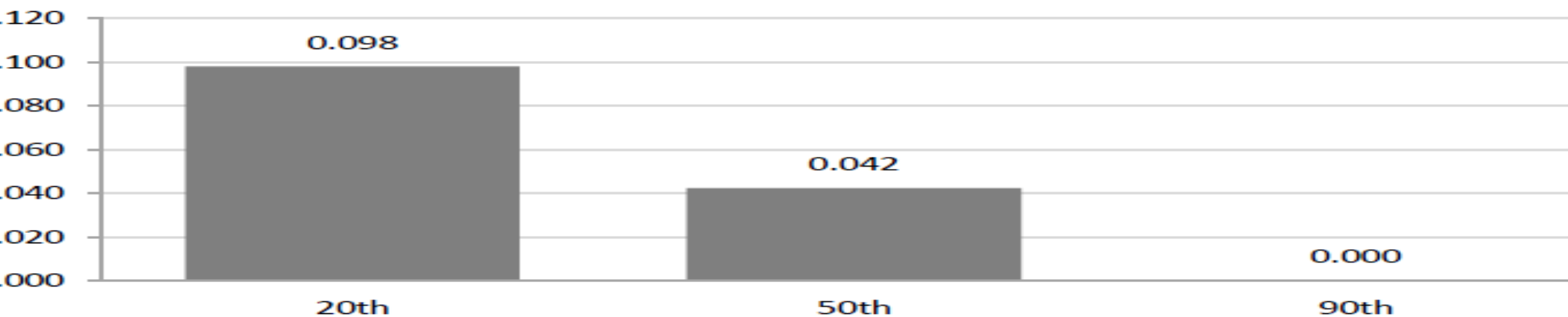


Percent of Quarters Unemp Was "Too High" 1949-2013



**FIGURE 2-7**

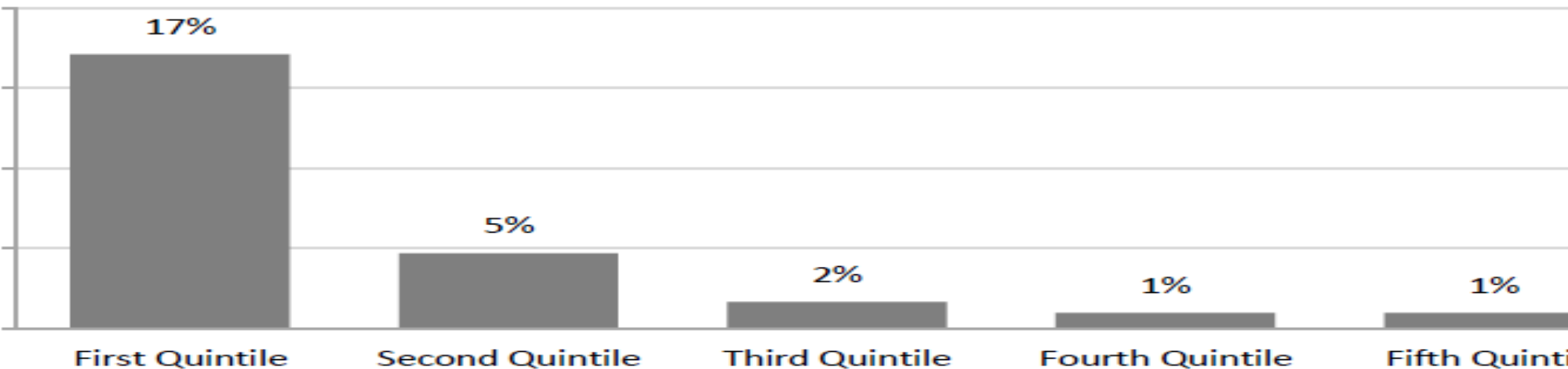
**Efficients on Hourly Wage Variables, Low, Middle and High Wage Workers**



Source: Authors' analysis.

**FIGURE 2-6**

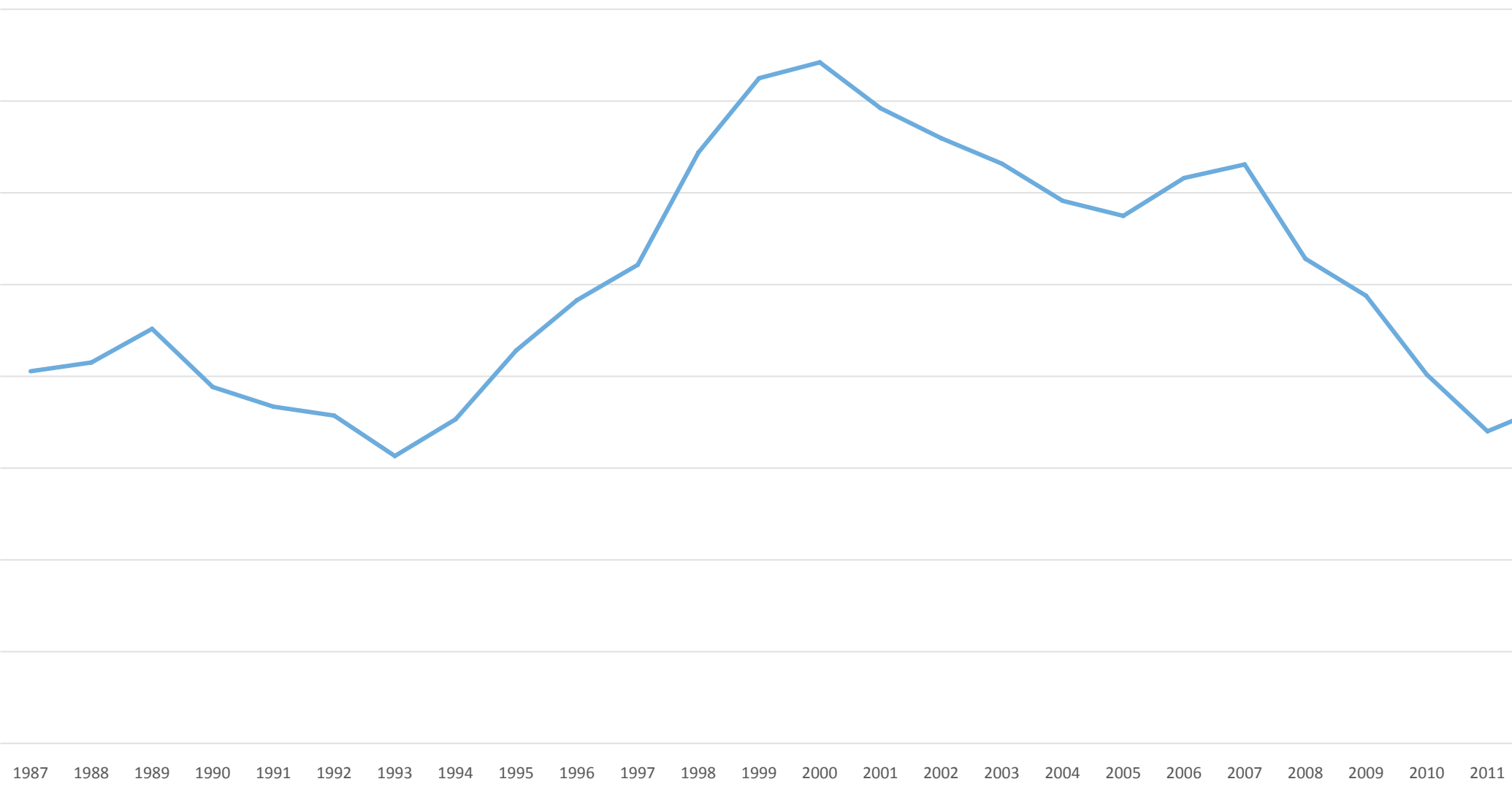
**Change in Annual Hours Worked, 1996-2000, by Income Fifth**



Source: Authors' analysis of U.S. Census Bureau microdata (Annual Social and Economic Supplement) provided by Economic Policy Institute.



# Real Median Income, Working Age HHs



Source: Census Bureau

# What's Right

Seatac Min Wg Victory: You go, Seattle!

Is it “outside the sample?” Yes...About time someone got outside the sample.

Recognition of inequality, opportunity linkages

Disgust with dysfunction

Demographic, racial, ethnic pressures: social insurance, politics, immigration reform.

Divergent quality of the analysis: He said, she said...but “she” can't be trusted!